



Yox Valley Newsletter



Spring Term 1 | February 2024



Dear Families,

Spring 1 has gone in a flash and it is hard to believe we are already at the point of half way through this academic year. All of our UKS 2 classes have really knuckled down this half term and the Year 6s have demonstrated how committed and enthusiastic they are to their learning which has been particularly lovely to observe. All of our KS1 classes have enjoyed educational visits to the local churches to complement their RE learning and a particular highlight for some of our LKS2 children has been the recreation of The Fire of London in the playground.

Hopefully Spring 2 promises some warmer and more settled weather and lots more opportunities to enjoy the outdoors and our local communities. Looking further forward to Summer 1 we are excited to announce that a Year 6 Residential has been secured for the days before half term to Winterton in North Norfolk. More details will follow immediately after the half term break, but this will be a really exciting opportunity for all our Year 6s who are working so hard.

Wishing all our families a relaxing and happy break and looking forward to seeing everyone again on the 26th February.

The Senior Leadership Team



Important Diary Dates 2024

February Half Term 19th- 23rd, returning back to school on the 26th.
Easter Half Term 29/03-15/04



Middleton

6/3 Pupil Parliament
 7/3 World book day (details TBC)
 7/3 NHS Dentist for those selected
 7/3 PTA Meeting 3:15pm
 8/3 Celebration Assembly 2:50pm
 20 & 21/3 Parent Consultations
 22/3 PTA Olympic Event

Southwold

1/3 Celebration Assembly 2:50pm
 6/3 Pupil Parliament
 7/3 World book day (details TBC)
 15/3 Mars & Jupiter @ Snape Maltings
 20 & 21/3 Parent Consultations

Y & P

6/3 Pupil Parliament
 7/3 World book day (details TBC)
 15/3 Celebration Assembly 8:50am
 20 & 21/3 Parent Consultations

Week Commencing 25/3 Yox Valley Easter Services- TBC



Email: office.middleton@consortiumtrust.org.uk
 Tel: 01728 648251
 www.middletonprimaryschool.org.uk



Email: Office.southwold@consortiumtrust.org.uk
 Tel: 01502 723137
 www.southwoldprimaryschool.org.uk



Email: office.yoxford@consortiumtrust.org.uk
 Tel: 01728 668291
 www.yoxfordandpeasehallprimaryschool.org.uk



MIDDLETON PRIMARY SCHOOL

Rectory Road
Middleton
IP17 3NW

Tel: 01728 648251

www.middletonprimaryschool.org.uk

Email:

office.middleton@consortiumtrust.org

Message from The PTA



We just wanted to take this opportunity to thank each and everyone of you who have supported our Bags2School and Cake Sale fundraising this half-term. Next half-term we have our Annual Quiz on Saturday 23rd March, 7pm @ Middleton Village Hall. Teams of upto 6 with Supper included. Your support of this event would be much appreciated. If you can't make a team, why not donate a Raffle prize? Every bit of support helps us provide more for the children at the school.

Best wishes and many thanks as always

Middleton Primary School PTA



Ash Class

This month Ash class have been busy learning all about Inventors and inventions.

The children enjoyed finding out about specific inventors and what they invented especially when they discovered how different toilets looked many years ago!

Ash Class have also been learning about features of music, Online Safety, mindfulness and in Science the children have been investigating different materials and identifying familiar objects that are made of specific types.



Polite reminders...

Please make sure all uniform is named and please can a change of clothes be provided as we have a limited supply available. Could any clothes that are borrowed please be returned as soon as possible too.

We read every day and change the books on a Friday so we would really appreciate your cooperation by sending your children's reading books with them each day. Thank you.

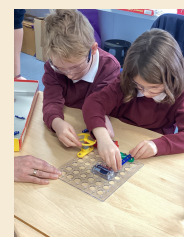


Spruce Class

As you know, Spruce Class had a fun and educational day at Sizewell B at the start of term. Since then, we have continued working on electricity; creating circuits with different components and problem solving when a circuit hasn't worked. More recently, children made predictions about whether they think a material will be a conductor or an insulator and have devised a test to find out!



Our new text in English is 'Women in Science' by Rachel Ignotofsky. Spruce pupils are learning about the struggles women faced in the past and about the lack of recognition they got for their discoveries. We have been writing biographies together about Lise Meitner. You might want to ask your child about her!





SOUTHWOLD PRIMARY SCHOOL

Cumberland Road
Southwold
IP18 6JP

Tel: 01502 723137

www.southwoldprimaryschool.org.uk

Email:

office.southwold@consortiumtrust.org



Astronauts

We have had an exciting time outside being pirates recently! Together we built a pirate ship and went on lots of adventures. We are fortunate to have an adaptable Early Years play area and garden that helps us bring stories and ideas to life, even on the chilly windy days of late winter. We are looking forward to Spring!



Mercury Class

Mercury class have been very busy in all areas of their learning. In English they have learnt to write an explanation about using laptops and riding bicycles, they loved using the equipment before they wrote about them. The children enjoyed learning about multiplication by playing games and singing songs. In Art they explored work by various artist such as Orla Kiely, Lucienne Day and Marimekko. They then made their own tiles to use for repeating patterns.



Jupiter Class

The Children in Jupiter class had a wonderful Educational Visit to Sizewell B Power Station on 1st February. The children learnt all about the electricity that is produced there and just how safe the environment is made to be. The dome is super, super strong. We did some experiments about Friction and built circuits. A great day with lots of learning was had by all. The children wrote thank you letters on the next day in their writing journals, and we sent these to the staff at Sizewell.



Mars Class

Mars class have had a wonderful half term of curiosity and enthusiasm for their learning. Our English studies have seen us writing explanation texts about their own inventions – ranging from a machine which washes, pairs and puts on your socks to a dog training machine. We continued our learning to focus on biographies, first exploring the biographies of women in science, with the children completing their own research and writing biographies of people who inspire them.

Maths has included an in depth look at fractions, decimals and percentages with the children now progressing onto algebra – a challenge that I am sure they will rise to.

In science, our focus has been light: aiming to answer the question, 'Does light only travel in straight lines?'. Here we have explored light including how light allows us to see, exploring reflection and refraction as well as looking at the spectrum of light and prisms.



Well done, Mars class. Keep up your dedication and hard work.





YOXFORD & PEASENHALL PRIMARY SCHOOL

High Street
Yoxford
IP17 3EU

Tel: 01728 668291

www.yoxfordandpeasehallprimaryschool.org.uk

Email: office.yoxford@consortiumtrust.org

WILLOW CLASS

We've had a really busy half term and worked as a team in so many different ways, so here's just a snippet from the last few weeks... We finished our gymnastics unit and incorporated some different ways of travelling and balancing with using the large apparatus. In science we have investigated types of circuits and conductors and insulators - lots of additional work went into trouble shooting our circuits too. Last week, for Safer Internet Day, Willow class worked together to identify ways that we are influenced by the internet - including things like push notifications, pop-ups, knowing when someone is typing etc .



ELM CLASS

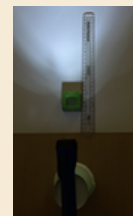
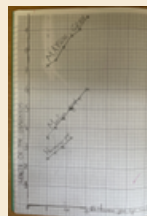
This term Elm has been enjoying our 'Inventions' topic. They have been listening to stories, designing and building vehicles. They especially enjoyed the book 'If I built a car.'

We also had our 'Come and Share.' We learnt all about Chinese New Year. The children enjoyed tasting Chinese food, making lanterns and lots of other dragon activities.



SILVER BIRCH

This term in Silver Birch we have been learning about light and developing our skills as scientists. We have learnt that light travels in straight lines from a source which can be natural or artificial. We have also explored how opaque objects cast a shadow. We investigated how moving an object away from a light source increased the length of the shadow due to the angle of our light source. We recorded our results in a table and looked for patterns to evaluate the reliability of our results. We presented our findings in a line graph and then considered how we would plan a subsequent investigation to explore how the height of an object would affect the shadow cast.



Distance from light source (cm)	Length of the shadow (cm)
5	3.5
7	4.0
9	4.5
1.1	5.0
1.3	5.5
1.5	6.0

OAK CLASS

Oak Class have been practicing different techniques in art, to work collaboratively on a piece, inspired by Vaserely, using stencils and paint. They also worked independently, inspired by Mondrian's Tableau No. 2, using potato printing.

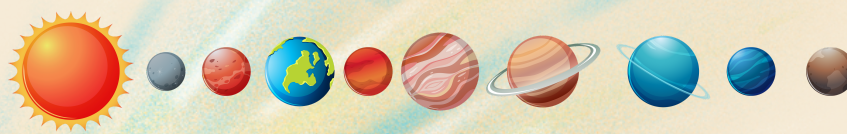


The children were having great fun acting out 'The Most Magnificent Thing' for their Talk for Writing, preparing for writing up the story .



Parents and carers came to Oak's wonderful Come and Share session, designing and building their very own inventions.





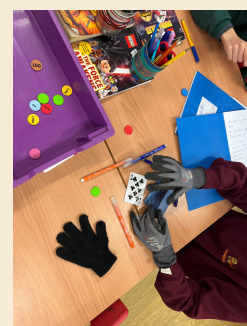
Yoxford & Peasenhall and Middleton Primary Schools Cubs & Beavers Spring Half Term



This term both sections have been working towards their astronomer badge.

The Beavers have been looking at the solar system and the different planets in the solar system. They have also learnt about the different stars and identified different constellations.

The Cubs have been learning what it is like to be an astronaut and completing different tasks as an astronaut would such as moving things with big gloves on, learning about the phases of the moon and exercising like they were onboard the International Space Station.



Dates for the Academic Year 2023/2024

September 2023

	Mo	Tu	We	Th	Fr	Sa	Su
					1	2	3
	4	5	6	7	8	9	10
	11	12	13	14	15	16	17
	18	19	20	21	22	23	24
	25	26	27	28	29	30	

October 2023

	Mo	Tu	We	Th	Fr	Sa	Su
							1
	2	3	4	5	6	7	8
	9	10	11	12	13	14	15
	16	17	18	19	20	21	22
	23	24	25	26	27	28	29
	30	31					

November 2023

	Mo	Tu	We	Th	Fr	Sa	Su
			1	2	3	4	5
	6	7	8	9	10	11	12
	13	14	15	16	17	18	19
	20	21	22	23	24	25	26
	27	28	29	30			

December 2023

	Mo	Tu	We	Th	Fr	Sa	Su
					1	2	3
	4	5	6	7	8	9	10
	11	12	13	14	15	16	17
	18	19	20	21	22	23	24
	25	26	27	28	29	30	31

January 2024

	Mo	Tu	We	Th	Fr	Sa	Su
	1	2	3	4	5	6	7
	8	9	10	11	12	13	14
	15	16	17	18	19	20	21
	22	23	24	25	26	27	28
	29	30	31				

February 2024

	Mo	Tu	We	Th	Fr	Sa	Su
				1	2	3	4
	5	6	7	8	9	10	11
	12	13	14	15	16	17	18
	19	20	21	22	23	24	25
	26	27	28	29			

March 2024

	Mo	Tu	We	Th	Fr	Sa	Su
					1	2	3
	4	5	6	7	8	9	10
	11	12	13	14	15	16	17
	18	19	20	21	22	23	24
	25	26	27	28	29	30	31

April 2024

	Mo	Tu	We	Th	Fr	Sa	Su
	1	2	3	4	5	6	7
	8	9	10	11	12	13	14
	15	16	17	18	19	20	21
	22	23	24	25	26	27	28
	29	30					

May 2024

	Mo	Tu	We	Th	Fr	Sa	Su
			1	2	3	4	5
	6	7	8	9	10	11	12
	13	14	15	16	17	18	19
	20	21	22	23	24	25	26
	27	28	29	30	31		

June 2024

	Mo	Tu	We	Th	Fr	Sa	Su
						1	2
	3	4	5	6	7	8	9
	10	11	12	13	14	15	16
	17	18	19	20	21	22	23
	24	25	26	27	28	29	30

July 2024

	Mo	Tu	We	Th	Fr	Sa	Su
	1	2	3	4	5	6	7
	8	9	10	11	12	13	14
	15	16	17	18	19	20	21
	22	23	24	25	26	27	28
	29	30	31				

PD DAYS

- 01/09 Statutory Training
- 04/09 School Directed
- 30/10 School Directed
- 03/01 Trust Directed